



MontAlpi

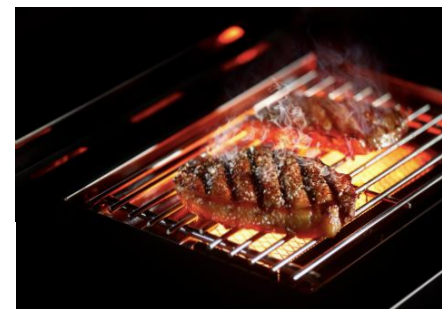
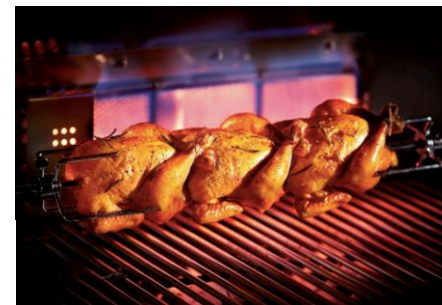
Peak Performance

Grills & Outdoor
Kitchens



MODERN GRANITE

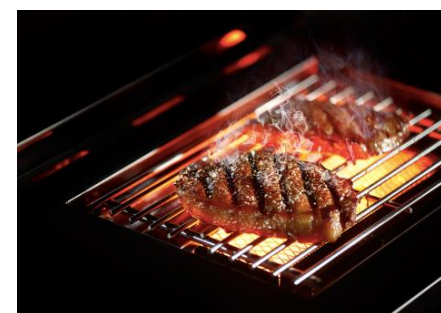
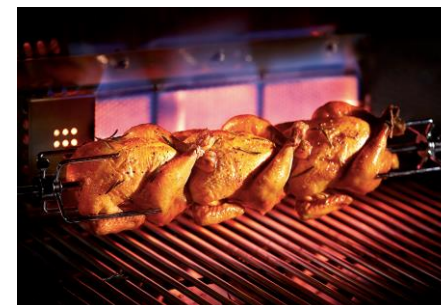
MONT ALPI 805 ISLAND DELUXE (MAI805-D)



- Six **304** Stainless Steel Burners.
- Ceramic Infrared Rear Burner,
- Ceramic Infrared Side Burner,
- Granite Surfaces and Sides (White)
- All **304** Stainless Steel components,
- 8mm **304** Stainless Steel Cooking Grills,
- Warming Wrack **304** Stainless Steel,
- Main Cooking Surface excluding Warming rack 38" x 18",
- Arrives fully assembled
- 115,000 BTU Heat Output,
- Temperature Gauge
- Rotisserie Kit with Electric Motor (included),
- Bottle Opener
- Cast Iron Enameled Griddle plate (Not Included),
- Weather Cover (Included),
- Two Cooking Surface Halogen Lights,
- Control Knobs with color changing LED Lights,
- Electronic Ignition,
- Gliding Rubber Castor Wheels (2 with Brakes),
- Assembled Dimensions :
- Grill unit 43x23x47",
- Left Side Burner unit 25x23x35",
- Right Side unit 25x23x35",
- Natural gas and Propane Ready.
- Propane Hose and Regulator included.
- Propane tank pull out for easy access
- Easy access grease trays for cleaning
- Large roller ball draws
- Granite chopping board (Included)



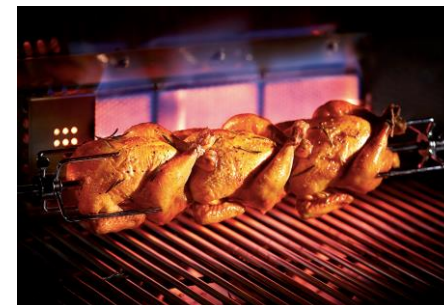
MONT ALPI 400 ISLAND (MAI400)



- Four **304** Stainless Steel Burners.
- Ceramic Infrared Rear Burner,
- Ceramic Infrared Side Burner,
- Granite Surfaces (White)
- All **304** Stainless Steel components,
- 8mm **304** Stainless Steel Cooking Grills,
- Warming Rack **304** Stainless Steel,
- Main Cooking Surface excluding Warming rack 38" x 18",
- Arrives fully assembled
- 78,000 BTU Heat Output,
- Temperature Gauge
- Rotisserie Kit with Electric Motor (included),
- Bottle Opener
- Cast Iron Enameled Griddle plate (Not Included),
- Weather Cover (Included),
- Two Cooking Surface Halogen Lights,
- Control Knobs with color changing LED Lights,
- Electronic Ignition,
- Gliding Rubber Castor Wheels (2 with Brakes),
- Assembled Dimensions :
- Grill unit 32x23x47",
- Left Side unit 25x23x35",
- Right Side unit 25x23x35",
- Natural gas and Propane Ready.
- Propane Hose and Regulator included.
- Propane tank pull out for easy access
- Easy access grease trays for cleaning
- Large roller ball draws
- Granite chopping board (included)



MONT ALPI 805 BLACK STAINLESS STEEL ISLAND (MAI805BSS)



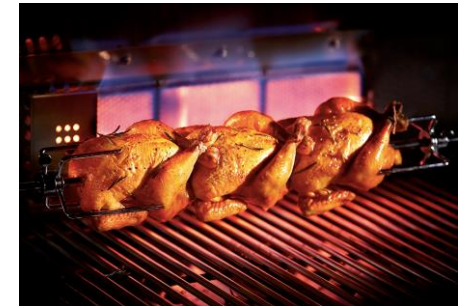
- **BLACK STAINLESS STEEL**
- Six **304** Stainless Steel Burners.
- Ceramic Infrared Rear Burner,
- Ceramic Infrared Side Burner,
- Granite Surfaces (White)
- All **304** Stainless Steel components,
- 8mm **304** Stainless Steel Cooking Grills,
- Warming Rack **304** Stainless Steel,
- Main Cooking Surface excluding Warming rack 38" x 18",
- Arrives fully assembled
- 115,000 BTU Heat Output,
- Temperature Gauge
- Rotisserie Kit with Electric Motor (included),
- Bottle Opener
- Cast Iron Enameled Griddle plate (Not Included),
- Weather Cover (Not Included),
- Two Cooking Surface Halogen Lights,
- Control Knobs with color changing LED Lights,
- Electronic Ignition,
- Gliding Rubber Castor Wheels (2 with Brakes),
- Assembled Dimensions :
- Grill unit 43x23x47",
- Left Side unit 25x23x35",
- Right Side unit 25x23x35",
- Natural gas and Propane Ready.
- Propane Hose and Regulator included.
- Propane tank pull out for easy access
- Easy access grease trays for cleaning
- Large roller ball draws



Chef inspired. Crafted to perfection.



MONT ALPI 805 ISLAND (MAI805)



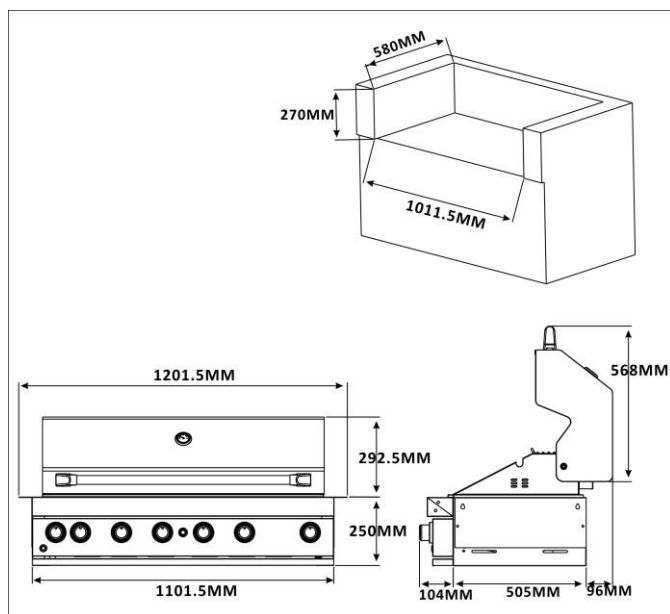
- Six **304** Stainless Steel Burners.
- Ceramic Infrared Rear Burner,
- Ceramic Infrared Side Burner,
- Granite Surfaces (White)
- All Stainless Steel components,
- 8mm **304** Stainless Steel Cooking Grills,
- Warming Rack **304** Stainless Steel,
- Main Cooking Surface excluding warming rack 38" x 18",
- 115,000 BTU Heat Output,
- Temperature Gauge
- Rotisserie Kit with Electric Motor (Not included),
- Bottle Opener
- Cast Iron Enameled Griddle plate (Not Included),
- Weather Cover (Not Included),
- Two Cooking Surface Halogen Lights,
- Control Knobs with color changing LED Lights,
- Electronic Ignition,
- Gliding Rubber Castor Wheels (2 with Brakes),
- Assembled Dimensions :
 - Grill unit 43x23x47",
 - Left Side Burner unit 25x23x35",
 - Right Side unit 25x23x35",
- Natural gas and Propane Ready.
- Propane Hose and Regulator included.
- Propane tank pull out for easy access
- Easy access grease trays for cleaning
- Large roller ball draws



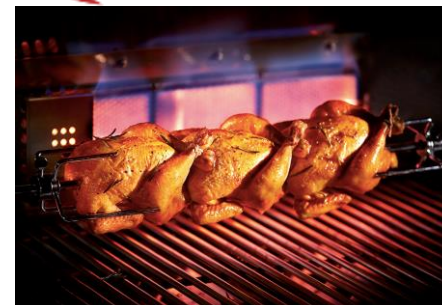
MONT ALPI BUILT-IN 805 44" (MABI805)



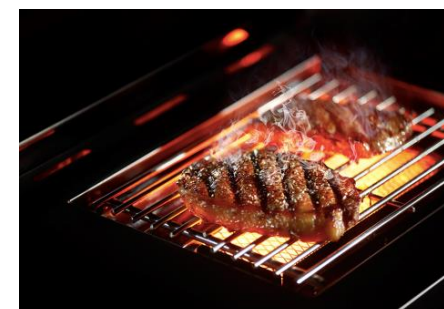
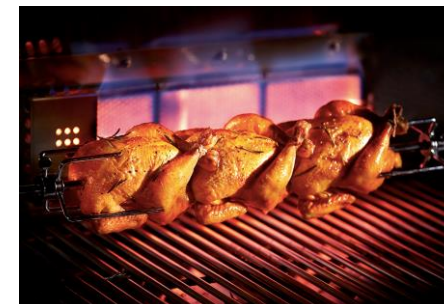
Cut Out Dimensions



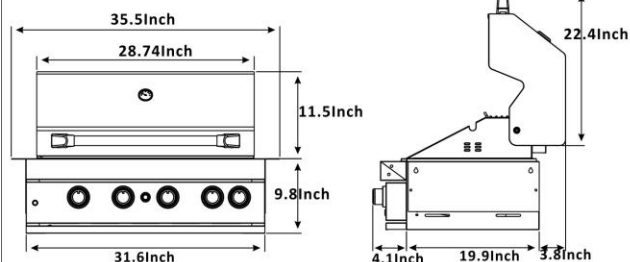
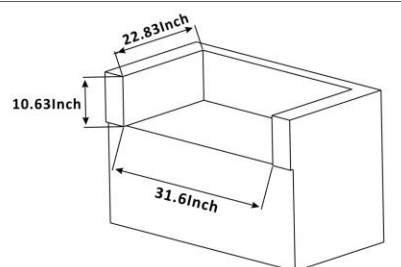
- DELIVERED FULLY ASSEMBLED
- Six main **304** Stainless Steel Burners.
- Ceramic Infrared Rear Burner.
- All Stainless Steel Cooking Components,
- 8mm **304** S/Steel Cooking Grills,
- Warming rack, **304** S/Steel
- Rotisserie Kit with Heavy Duty Electric Motor (included),
- Weather Cover (Not Included),
- Cast-iron Griddle Plate (Not included)
- Two Cooking Surface Halogen Lights,
- Control Knobs have color changing LED Lights,
- Electronic Ignition,
- 87.000 BTU Heat Output,
- Dimensions 43.5 x 23 x 25",
- Fully **304** Stainless steel ,
- Natural gas and Propane Ready.
- Propane Hose and Regulator included.
- (Natural Gas Hose not included)
- Temperature Gauge
- Bottle Opener



MONT ALPI BUILT-IN 400 32" (MABI400)



Cut Out Dimensions



- DELIVERED FULLY ASSEMBLED
- Four main **304** Stainless Steel Burners.
- Ceramic Infrared Rear Burner.
- All Stainless Steel Cooking Components,
- 8mm **304** S/Steel Cooking Grills,
- Warming rack, **304** S/Steel
- Rotisserie Kit with Heavy Duty Electric Motor (included),
- Weather Cover (Not Included),
- Cast-iron Griddle Plate (Not included)
- Two Cooking Surface Halogen Lights,
- Control Knobs have color changing LED Lights,
- Electronic Ignition,
- 68.000 BTU Heat Output,
- Dimensions 32 x 23 x 25",
- Fully **304** Stainless steel ,
- Natural gas and Propane Ready.
- Propane Hose and Regulator included.
- (Natural Gas Hose not included)
- Temperature Gauge
- Bottle Opener



MONT ALPI SUPREME BLACK STAINLESS STEEL (S-470)



- **BLACK STAINLESS STEEL**
- Four **304** Stainless Steel Burners.
- Ceramic Infrared Rear Burner,
- Ceramic Infrared Side Burner,
- Faux Granite Surfaces (White)
- All Stainless Steel components,
- Stainless Steel Cooking Grills,
- Warming Rack Stainless Steel,
- 78,000 BTU Heat Output,
- Temperature Gauge
- Rotisserie Kit with Electric Motor (included),
- Bottle Opener
- Cast Iron Enameled Griddle plate (Not Included),
- Weather Cover (Not Included),
- Two Cooking Surface Halogen Lights,
- Control Knobs with color changing LED Lights,
- Electronic Ignition,
- Gliding Rubber Castor Wheels (2 with Brakes),
- Natural gas and Propane Ready.
- Propane Hose and Regulator included.
- Propane tank pull out for easy access
- Easy access grease trays for cleaning



MONT ALPI BEVERAGE CENTER



MASF – Stainless steel



MASF-BSS
Black Stainless steel

- The Mont Alpi beverage center finished with white granite counter top makes a beautiful addition to a Mont Alpi island grill or as a stand-alone beverage center on your patio. It comes standard with an outdoor rated fridge including lights, stainless steel sink with faucet. Made with all 304 marine grade stainless steel.
- Available in Stainless steel (above) or BLACK stainless steel (below)



MONT ALPI FRIDGE CABINET



MAIF

The refrigerator cabinet is finished with white granite counter top makes a beautiful addition to the island grill. It is outdoor rated with lights and is made with the marine grade stainless steel.

MONT ALPI PORTABLE PIZZA OVEN (MAPZ)



- Stainless Steel
- "-U" shaped S/Steel burner for all around high heat
- 12,000 BTU
- Oven like performance in 5 Minutes (620 F)
- Perfect for Pizza
- 12" Pizza design
- Great for roasting (Whole chickens and larger meats)
- Removable front door
- Accurate temperature gauge
- Propane (convertible to natural gas)
- Removable Floor Pan
- Pull out fat tray

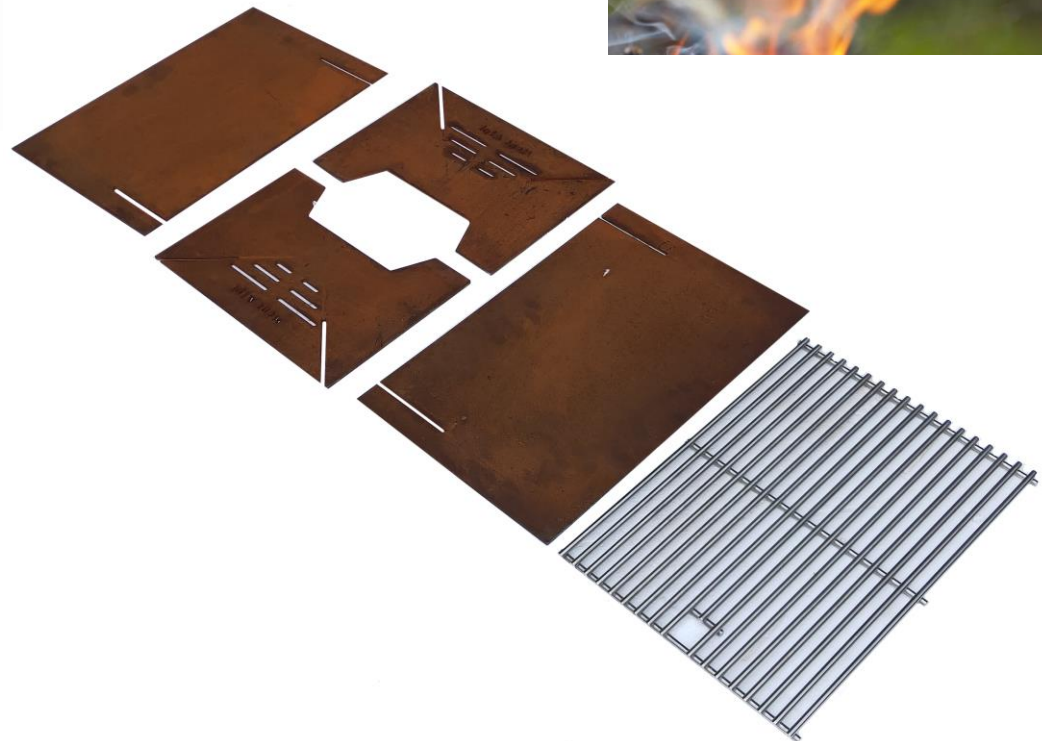
- Dishwasher friendly cleaning
- Stainless steel cooking grid
- 12" Chef style Pizza stone.
- Net weight 27 lb
- Easy start up ignition



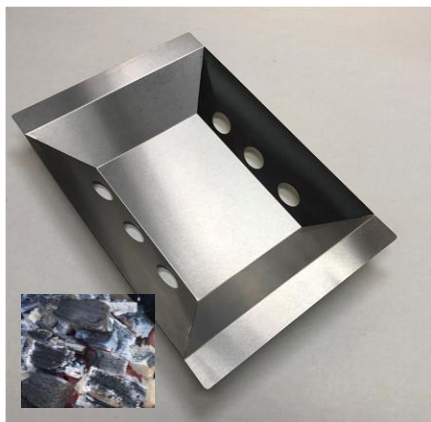
MONT ALPI FIRE PIT (MAFP)



- **Mont Alpi Pire Pit**
- Strong and versatile
- Unique and stylish pre-rusted look.
- Comes with heavy duty 304 stainless steel cooking grid.
- Flat pack for easy storage and transport
- Measurements 20"x16"x12"
- Durable
- Comes with easy use ash catcher for safety and to make clean up simple
- Assembles in under a minute. No tools are required
- The dream toy for all



MONT ALPI ACCESSORIES



STAINLESS STEEL CHARCOAL PAN
Turns your gas grill into a hybrid grill.
With cross flow ventilation. Lights easily
using the gas. No need for lighter fluid.
Best way to enjoy charcoal grilling



SIDE BURNER PIZZA OVEN
The Side Burner Pizza Oven makes a great addition to any
side burner. The oven is a universal side burner oven and
will fit most side burners. The oven will fit a personal sized
pizza. Upgrade your outdoor kitchen with this awesome
little addition.



NATURAL GAS CONVERSION KIT.



WEATHER COVERS
Keeping It Clean.
Multiple sizes available to fit your grill



CAST IRON DUAL SIDED GRIDDLE PLATE
Great for shrimp, fish and all the vegetables you can
think of.

MONT ALPI WAS BORN OUT OF A GENUINE PASSION FOR THE GRILLING INDUSTRY.

THERE IS A DEFINITE NEED FOR A GOOD ALL ROUND GRILL THAT CAN MAKE OUTDOOR LIFE FUN AND VERSATILE.
AN AESTHETICALLY PLEASING RANGE TO SUIT ALL NEEDS.

A FAMILY BUSINESS WITH OVER 30 YEARS OF INDUSTRY EXPERIENCE AND PASSION.

OUR GRILLS ARE ROBUST AND EXPERTLY MADE TO DELIVER THE ULTIMATE COOKING EXPERIENCE DEMANDED BY SEASONED BBQ GRILLERS. YOU DON'T HAVE TO BE AN EXPERT TO USE MONT ALPI PRODUCTS, BUT ALL YOUR FRIENDS AND FAMILY WILL THINK YOU ARE WHEN THEY SEE AND TASTE WHAT YOU PRODUCE USING YOUR MONT ALPI GRILL.
WE ARE HERE TO SUPPORT AND HELP YOU BECOME THE BEST CHEF IN THE NEIGHBORHOOD.

ENJOY YOUR GRILL !!!





Mont Alpi

Peak Performance



Distribution DWP

Personnel Option Plus Inc.

Matériaux de tout genre Intérieur & Extérieur

- Planchers divers
- Revêtement ext.
- Balcon Polybois
- Rampe alu.pvc
- Climatiseur ect.
- Éviers, Robinets
- Pierre & Brique déco.
- Thermopompes
- Arrêt neige ou Glace
- Abris auto, Gazebo
- Barbecue, Fumoir
- Serrures, Quincaillerie
- Foyers bois-gaz-élec.

Beaucoup plus informez-vous.

Daniel Jordan Pres.
Mascouche Qc J7L 1M2

Salle de montre sur RDV

514-239-8744

info@distributiondwp.com
www.distributiondwp.com

www.MontAlpiOnline.com